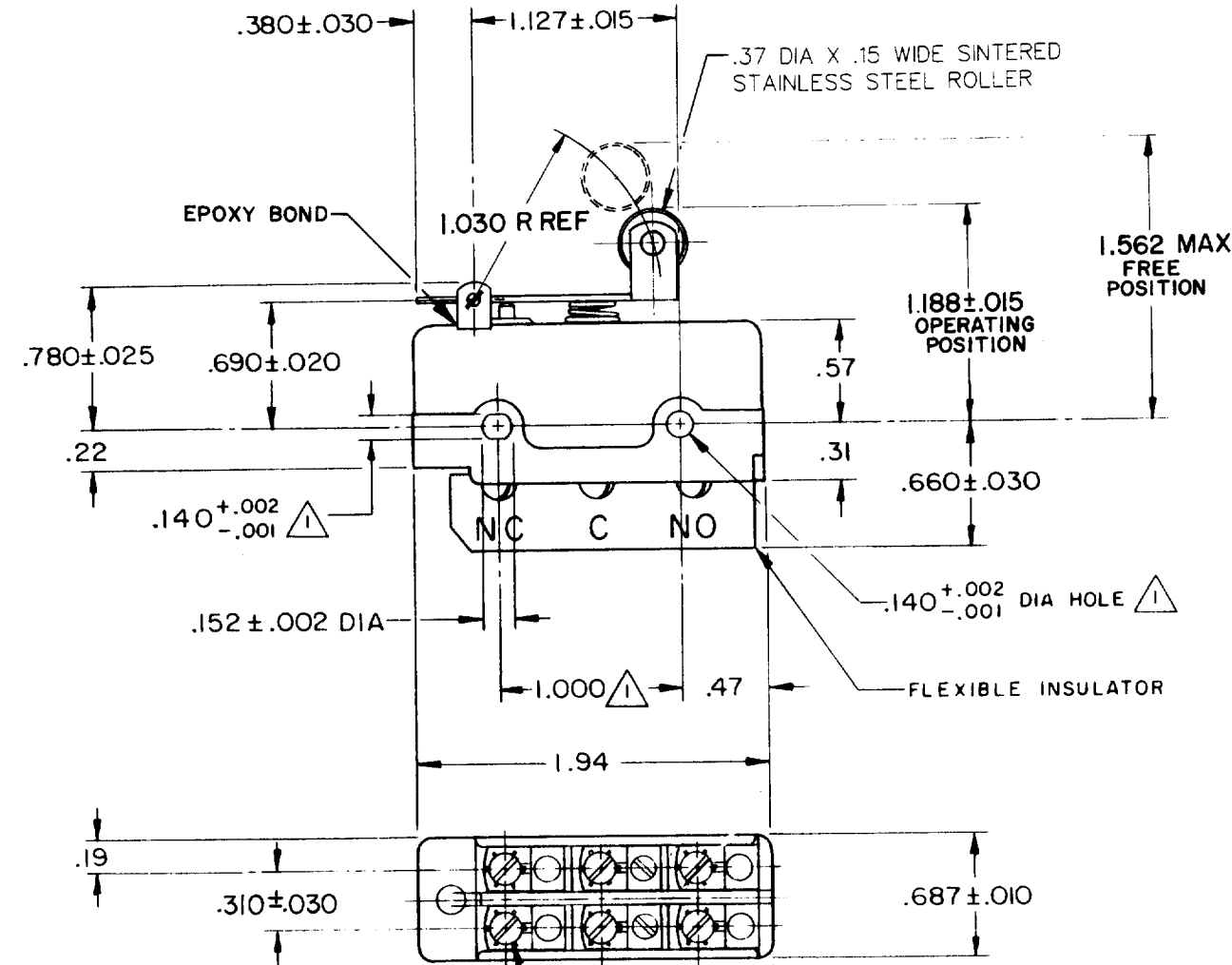


DT-2RV22-A7
 M DT-2RV22-A7
 DRAWING NUMBER
 ISSUE 7 & 13
 REVISIONS
 A CO17725 L E B 11 JUNE 63
 B CO24941 M B S 2 DEC 68
 C CO28075 M B S 26 AUG 69
 D CO37528 C J H 31 AUG 76
 E CO38280
 K P K 30 MAR 77
 F CO61634 TSK 17 JUL 87
 G CO75204-B CO 1 FEB 94
 S A V
 FO-50378
 DRAWN
 L E B 11 JUNE 63
 CHECK
 L S D
 19 JUN 63
 CHECK
 19 JUN 63
 REPLACES
 RELEASE NO.



② 4-40 UNC X .125 REF ROUND HEAD SCREW AND LOCKWASHER (6)

NOTE -
 MOUNTING HOLES WILL ACCEPT PINS OR SCREWS OF .139 MAX DIA ON 1.000±.002 CENTERS

THIS DRAWING COVERS A PROPRIETARY ITEM AND IS THE PROPERTY OF MICRO SWITCH, A DIVISION OF MINNEAPOLIS-HONEYWELL REGULATOR CO. THIS DRAWING IS NOT TO BE COPIED OR USED WITHOUT THE APPROVAL OF MICRO SWITCH.

CHARACTERISTICS	ELECTRICAL DATA	SCALE FULL
OPERATING FORCE ----- 9-14 OZ	CONTACT ARRANGEMENT D P D T	DO NOT SCALE PRINT
RELEASE FORCE ----- 3 OZ MIN	UL LISTED-FILE E12252 CODE L59 10A-125 OR 250 VAC 0.3A-125 VDC; 0.15A-250 VDC 	UNLESS OTHERWISE NOTED DIMENSIONS ARE IN INCHES TOLERANCES ARE:
DIFFERENTIAL TRAVEL ----- .195-.305		ONE PLACE (.0) ±.030
OVERTRAVEL ----- .031 MIN		TWO PLACE (.00) ±.015
		THREE PLACE (.000) ±.005
		ANGLES ±
		WEIGHT .085 LB